



Octave Labs

Sample 809-112524-010

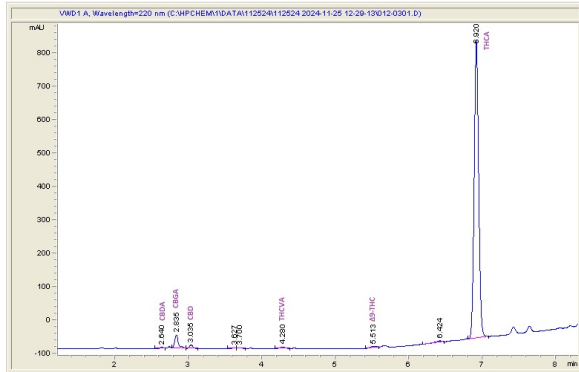
Permanent Marker

Sample Submitted: 11-25-2024; Report Date: 11-29-2024

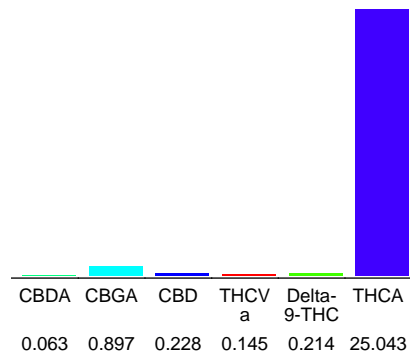
## Permanent Marker

Plant Material: Hemp Flower

### Chromatogram



### Cannabinoid Profile



### Cannabinoid Profile by HPLC

**0.21%**  
Delta-9-THC

**0.23%**  
CBD

**26.59%**  
Total Cannabinoids

Cannabinoid	% wt	mg/g
CBDA	0.063	0.63
CBGA	0.897	8.97
CBD	0.228	2.28
THCVa	0.145	1.45
Delta-9-THC	0.214	2.14
THCA	25.04	250.43
<b>Total Cannabinoids</b>	<b>26.59</b>	<b>265.9</b>
<b>Calculated Total THC</b>	<b>22.18</b>	<b>221.77</b>
<b>Calculated CBD Yield</b>	<b>0.28</b>	<b>2.83</b>

Calculated Total THC = Delta-9-THC + 0.877 \* THCA

Calculated Maximum CBD Yield = CBD + 0.877 \* CBDA

**Marin Analytics, LLC**  
250 Bel Marin Keys Blvd, Suite D4  
Novato, CA 94949

833-321-TEST / info@marinanalytics.com

**Mike Clemmons**  
Lab Manager

This sample has been tested by Marin Analytics, LLC using valid testing methodologies and a quality system. Values reported relate only to the sample tested. Marin Analytics, LLC makes no claims as to the efficacy, safety, or other risks associated with any detected or non-detected levels of any compounds reported herein. This Certificate shall not be reproduced except in full without the written approval of Marin Analytics, LLC. Copyright 2023 Marin Analytics, LLC All Rights Reserved.

Sample Name: <b>PERMANENT MARKER</b>	License: <b>AG-R1066923IHH</b>
Tested for: <b>Octave Labs R&amp;D Testing</b>	Date Sampled: <b>11/19/24 18:00</b>
Laboratory ID: <b>24K0118-02</b> Strain: <b>PERMANENT</b>	Date Accepted: <b>11/25/24</b>
Matrix: <b>Useable Marijuana</b>	Sample Metrc ID: <b>N/A</b>
Lot # <b>N/A</b>	Batch RFID: <b>N/A</b>
	Batch Size: <b>N/A</b>

### Terpene Analysis

Date Extracted: 11/27/24	Analysis Method: Terpenes by GCFID				
Date Analyzed: 11/27/24					
Analyte	Result (%)	LOQ	Analyte	Result	LOQ
alpha Pinene	0.2833	0.0085	beta Myrcene	0.4556	0.0085
alpha Phellandrene	< LOQ	0.0085	3-Carene	< LOQ	0.0085
alpha Terpinene	< LOQ	0.0085	Limonene	0.3873	0.0085
Terpinolene	< LOQ	0.0085	Linalool	0.1564	0.0085
Fenchol	0.0331	0.0085	Borneol	0.0091	0.0085
Terpineol	0.0381	0.0085	Geraniol	< LOQ	0.0085
alpha Humulene	0.1431	0.0085	beta Caryophyllene	0.4455	0.0085
(-)-Caryophyllene Oxide	< LOQ	0.0085	(-)-alpha Bisabolol	0.0200	0.0085
Camphene	0.0123	0.0085	beta Pinene	0.1421	0.0085
Ocimene	< LOQ	0.0085	Sabinene	< LOQ	0.0085
Camphor	< LOQ	0.0085	Isoborneol	< LOQ	0.0085
Menthol	< LOQ	0.0085	alpha Cedrene	< LOQ	0.0085
Nerolidol	0.0165	0.0085	(+)-Pulegone	< LOQ	0.0085
Eucalyptol	< LOQ	0.0085	p-Cymene	< LOQ	0.0085
(-)-Isopulegol	< LOQ	0.0085	Geranyl Acetate	< LOQ	0.0085
Guaiol	0.0125	0.0085	Valencene	< LOQ	0.0085
Phytol	< LOQ	0.0085	Citronellol	< LOQ	0.0085
gamma Terpinene	< LOQ	0.0085	Farnesene	0.1035	0.0085
Fenchone	< LOQ	0.0085	Nerol	< LOQ	0.0085
Sabinene Hydrate	< LOQ	0.0085	(+)-Cedrol	< LOQ	0.0085
<b>Total Terpenes</b>				<b>2.258 %</b>	

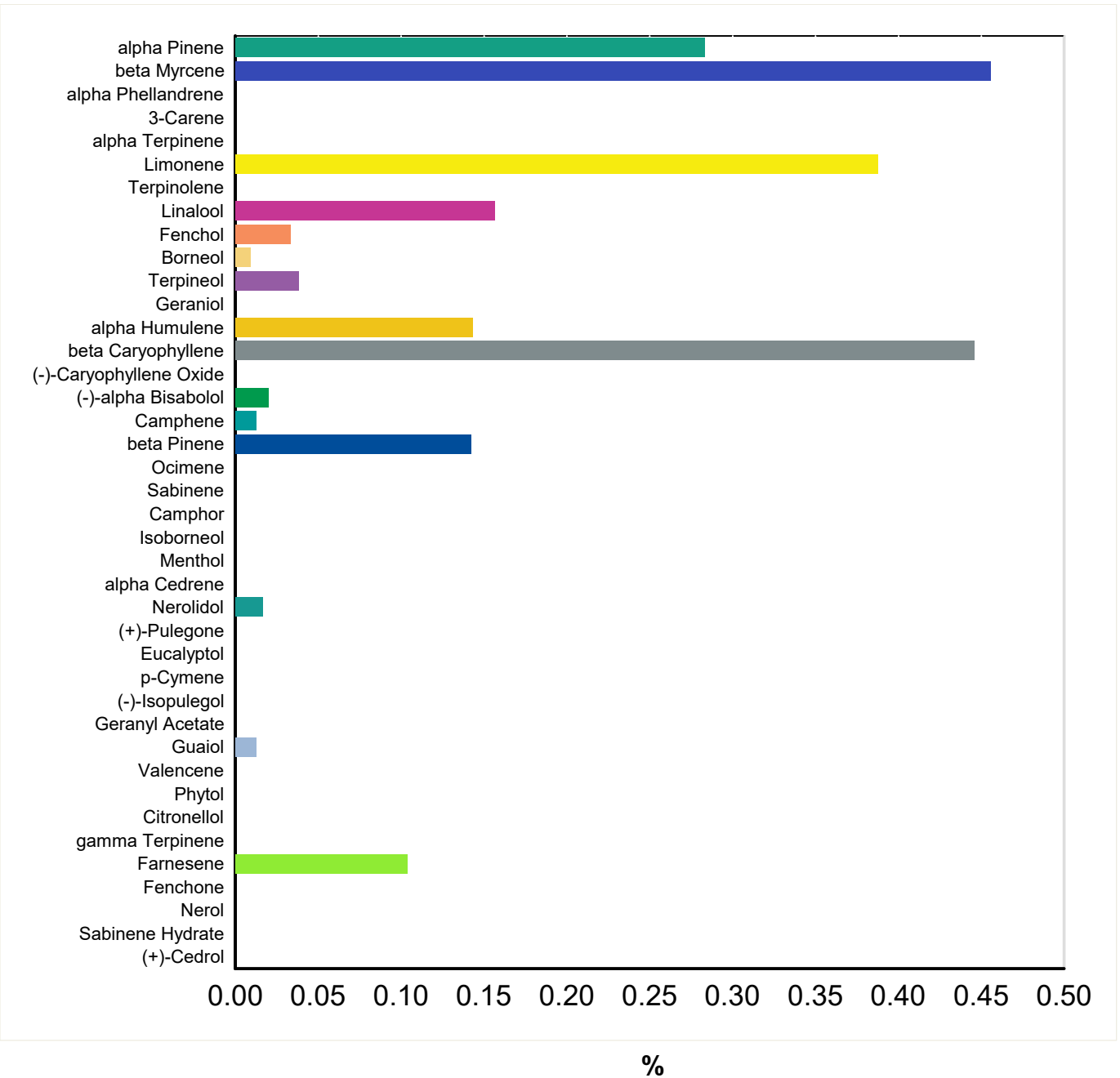
<LOQ - Results below the Limit of Quantitation  
 Terpene Analysis is not ORELAP Accredited.

  
 Breeanna Hamilton  
 Lab Director

These results relate only to the sample included on this report. The report may not be reproduced except in full, without the written permission of SC Laboratories. Samples tested in accordance with Oregon Administrative Rules, TNI 2016 Standard and SC Laboratories quality assurance plan unless otherwise noted.

Sample Name: <b>PERMANENT MARKER</b>	License: <b>AG-R1066923IHH</b>
Tested for: <b>Octave Labs</b>	Date Sampled: <b>11/19/24 18:00</b>
<b>R&amp;D Testing</b>	Date Accepted: <b>11/25/24 09:43</b>
Laboratory ID: <b>24K0118-02</b>	Matrix: <b>Useable Marijuana</b>
	Client/Metric ID: <b>N/A</b>

### Terpene Profile



*Breeanna Hamilton*  
 Breeanna Hamilton  
 Lab Director

These results relate only to the sample included on this report. The report may not be reproduced except in full, without the written permission of SC Laboratories. Samples tested in accordance with Oregon Administrative Rules, TNI 2016 Standard and SC Laboratories quality assurance plan unless otherwise noted.

**Sample Name:** Homogenized THCA Flower Full Panel  
**Tested for:** *Octave Labs*  
**R&D Testing**

**Laboratory ID:** 24K0118-01

**Matrix:** Useable Marijuana

**Sample Metrc ID:** N/A

**Lot #** N/A

**Batch RFID:** N/A

**Batch Size:** N/A

**Strain:** Homogenized THCA Flower

Full Panel

**Harvest Date:** N/A

**License:** AG-R1066923IHH

**Date Sampled:** 11/19/24 18:00

**Date Accepted:** 11/25/24

### Water Activity and Moisture

Analyte	Result	Limit	Units	LOQ	Analyzed	Method
Percent Moisture	10.9	15	%	0.10	12/02/2024	AOAC 966.02

Cannabinoids reported as dry weight (moisture corrected)

Results above the action level are highlighted in red #.

<LOQ - Results below the Limit of Quantitation

  
 Breeanna Hamilton  
 Lab Director

These results relate only to the sample included on this report. The report may not be reproduced except in full, without the written permission of SC Laboratories. Samples tested in accordance with Oregon Administrative Rules, TNI 2016 Standard and SC Laboratories quality assurance plan unless otherwise noted.

Sample Name: <b>Homogenized THCA Flower Full Panel</b>	License: <b>AG-R1066923IHH</b>
Tested for: <b>Octave Labs</b>	Date Sampled: <b>11/19/24 18:00</b>
<b>R&amp;D Testing</b>	Date Accepted: <b>11/25/24</b>
Laboratory ID: <b>24K0118-01</b>	Strain: <b>Homogenized</b>
Matrix: <b>Useable Marijuana</b>	Sample Metrc ID: <b>N/A</b>
Lot # <b>N/A</b>	Batch RFID: <b>N/A</b>
	Batch Size: <b>N/A</b>

### Pesticide Analysis in ppm

Date Extracted: 11/27/24	Analysis Method: SC-OR-ORG-003
Date Analyzed: 11/28/24	Results above the action levels are highlighted in red #.

Analyte	Result	Action Level	LOQ	Analyte	Result	Action Level	LOQ
Abamectin	< LOQ	0.5	0.24	Acephate	< LOQ	0.4	0.20
Acequinocyl	< LOQ	2	0.98	Acetamiprid	< LOQ	0.2	0.10
Aldicarb	< LOQ	0.4	0.20	Azoxystrobin	< LOQ	0.2	0.10
Bifenazate	< LOQ	0.2	0.10	Bifenthrin	< LOQ	0.2	0.10
Boscalid	< LOQ	0.4	0.20	Carbaryl	< LOQ	0.2	0.10
Carbofuran	< LOQ	0.2	0.10	Chlorantraniliprole	< LOQ	0.2	0.10
Chlorfenapyr	< LOQ	1	0.49	Chlorpyrifos	< LOQ	0.2	0.10
Clofentezine	< LOQ	0.2	0.10	Cyfluthrin	< LOQ	1	0.49
Cypermethrin	< LOQ	1	0.49	Daminozide	< LOQ	1	0.49
DDVP (Dichlorvos)	< LOQ	1	0.49	Diazinon	< LOQ	0.2	0.10
Dimethoate	< LOQ	0.2	0.10	Ethoprophos	< LOQ	0.2	0.10
Etofenprox	< LOQ	0.4	0.20	Etoxazole	< LOQ	0.2	0.10
Fenoxycarb	< LOQ	0.2	0.10	Fenpyroximate	< LOQ	0.4	0.20
Fipronil	< LOQ	0.4	0.20	Fonicamid	< LOQ	1	0.49
Fludioxonil	< LOQ	0.4	0.20	Hexythiazox	< LOQ	1	0.49
Imazalil	< LOQ	0.2	0.10	Imidacloprid	< LOQ	0.4	0.20
Kresoxim-methyl	< LOQ	0.4	0.20	Malathion	< LOQ	0.2	0.10
Metalaxyl	< LOQ	0.2	0.10	Methiocarb	< LOQ	0.2	0.10
Methomyl	< LOQ	0.4	0.20	Methyl parathion	< LOQ	0.2	0.10
MGK-264	< LOQ	0.2	0.10	Myclobutanil	< LOQ	0.2	0.10
Naled	< LOQ	0.5	0.24	Oxamyl	< LOQ	1	0.49
Paclobutrazol	< LOQ	0.4	0.20	Permethrins (total)	< LOQ	0.2	0.10
Phosmet	< LOQ	0.2	0.10	Piperonyl butoxide	< LOQ	2	0.49
Prallethrin	< LOQ	0.2	0.10	Propiconazole	< LOQ	0.4	0.20
Propoxur	< LOQ	0.2	0.10	Pyrethrins (total)	< LOQ	1	0.49
Pyridaben	< LOQ	0.2	0.10	Spinosad	< LOQ	0.2	0.10
Spiromesifen	< LOQ	0.2	0.10	Spirotetramat	< LOQ	0.2	0.10
Spiroxamine	< LOQ	0.4	0.20	Tebuconazole	< LOQ	0.4	0.20
Thiacloprid	< LOQ	0.2	0.10	Thiamethoxam	< LOQ	0.2	0.10
Trifloxystrobin	< LOQ	0.2	0.10				

<LOQ - Results below the Limit of Quantitation

  
 Breeanna Hamilton  
 Lab Director

These results relate only to the sample included on this report. The report may not be reproduced except in full, without the written permission of SC Laboratories. Samples tested in accordance with Oregon Administrative Rules, TNI 2016 Standard and SC Laboratories quality assurance plan unless otherwise noted.

**Sample Name: Homogenized THCA Flower Full Panel**      **License: AG-R1066923IHH**  
**Tested for: Octave Labs**      **Date Sampled: 11/19/24 18:00**  
**R&D Testing**      **Date Accepted: 11/25/24**

**Laboratory ID: 24K0118-01**      **Strain: Homogenized**      **Sample Metric ID: N/A**  
**Matrix: Useable Marijuana**      **Batch RFID: N/A**  
**Lot # N/A**      **Batch Size: N/A**

### Mycotoxin Analysis by LCMSMS

**Date/Time Extracted: 11/27/24 16:00**

**Analysis Method/SOP: SC-OR-ORG-003**

**Date/Time Analyzed: 11/28/24**

Results above the action levels are highlighted in **red #**.

Analyte	Result	LOQ	Units	Action Level
Aflatoxin B1	< LOQ	0.005	ppm	0.02
Aflatoxin B2	< LOQ	0.005	ppm	0.02
Aflatoxin G1	< LOQ	0.005	ppm	0.02
Aflatoxin G2	< LOQ	0.005	ppm	0.02
Aflatoxins (Total)	< LOQ	0.005	ppm	0.02
Ochratoxin A	< LOQ	0.01	ppm	0.02

  
 Breeanna Hamilton  
 Lab Director

These results relate only to the sample included on this report. The report may not be reproduced except in full, without the written permission of SC Laboratories. Samples tested in accordance with Oregon Administrative Rules, TNI 2016 Standard and SC Laboratories quality assurance plan unless otherwise noted.

Sample Name: <b>Homogenized THCA Flower Full Panel</b>	License: <b>AG-R1066923IHH</b>
Tested for: <b>Octave Labs</b>	Date Sampled: <b>11/19/24 18:00</b>
<b>R&amp;D Testing</b>	Date Accepted: <b>11/25/24</b>
Laboratory ID: <b>24K0118-01</b>	Strain: <b>Homogenized</b>
Matrix: <b>Useable Marijuana</b>	Sample Metrc ID: <b>N/A</b>
Lot # <b>N/A</b>	Batch RFID: <b>N/A</b>
	Batch Size: <b>N/A</b>
<b>Microbiological Analysis by qPCR</b>	
Date/Time Extracted: <b>11/26/24 16:40</b>	Analysis Method/SOP: <b>PathoSEEK qPCR</b>
Date/Time Analyzed: <b>11/27/24</b>	Results above the action levels are highlighted in <b>red #</b> .
Analyte	Result (Present/Absent)
Salmonella	Absent
Shiga toxin producing E. Coli (STEC)	Absent

  
 Breeanna Hamilton  
 Lab Director

These results relate only to the sample included on this report. The report may not be reproduced except in full, without the written permission of SC Laboratories. Samples tested in accordance with Oregon Administrative Rules, TNI 2016 Standard and SC Laboratories quality assurance plan unless otherwise noted.

**Sample Name: Homogenized THCA Flower Full Panel**      **License: AG-R1066923IHH**  
**Tested for: Octave Labs**      **Date Sampled: 11/19/24 18:00**  
**R&D Testing**      **Date Accepted: 11/25/24**

**Laboratory ID: 24K0118-01**      **Strain: Homogenized**      **Sample Metrc ID: N/A**  
**Matrix: Useable Marijuana**      **Batch RFID: N/A**  
**Lot # N/A**      **Batch Size: N/A**

### Metals Analysis by ICPMS

**Date/Time Extracted: 11/26/24 16:07**

**Analysis Method/SOP: AOAC 2013.06**

**Date/Time Analyzed: 11/27/24**

Results above the action levels are highlighted in **red #**.

Analyte	Result	LOQ	Units	Action Level
Arsenic (As)	< LOQ	0.099	ug/g	0.2
Cadmium (Cd)	< LOQ	0.099	ug/g	0.2
Lead (Pb)	< LOQ	0.099	ug/g	0.5
Mercury (Hg)	< LOQ	0.050	ug/g	0.1

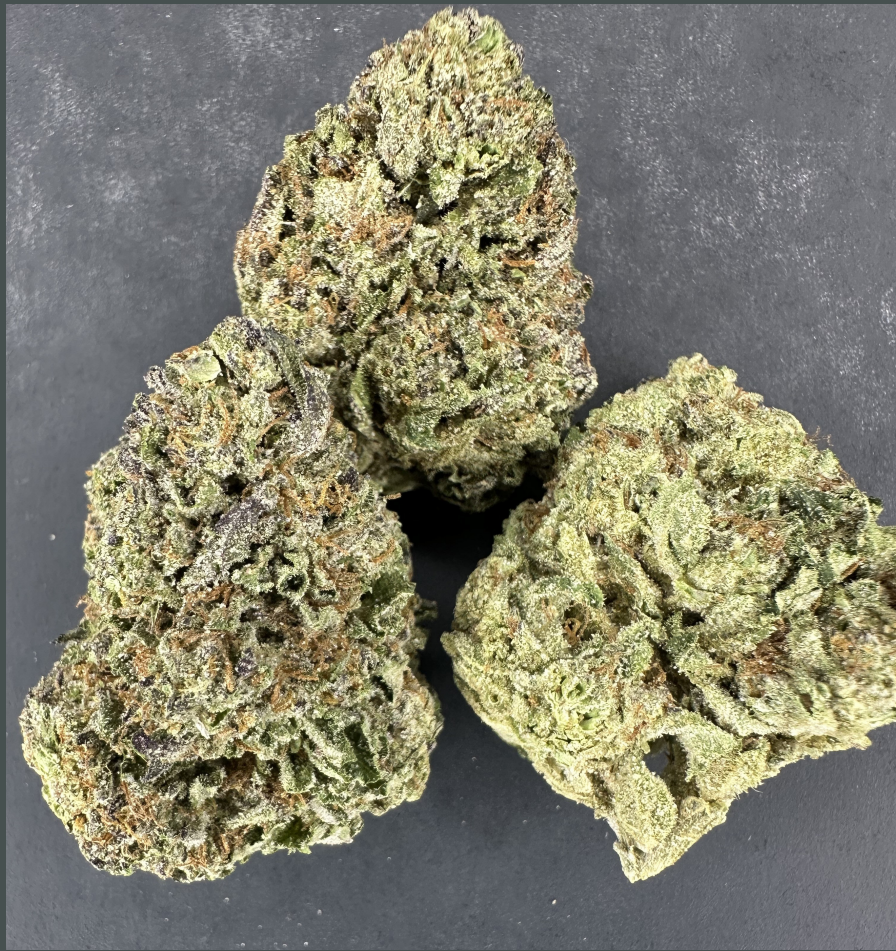


Breeanna Hamilton  
 Lab Director

These results relate only to the sample included on this report. The report may not be reproduced except in full, without the written permission of SC Laboratories. Samples tested in accordance with Oregon Administrative Rules, TNI 2016 Standard and SC Laboratories quality assurance plan unless otherwise noted.



# PERMANENT MARKER



# PERMANENT MARKER

